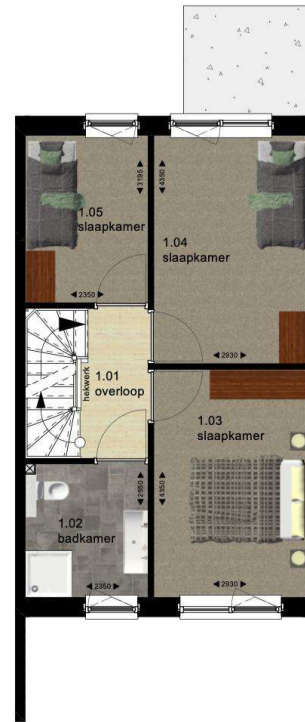
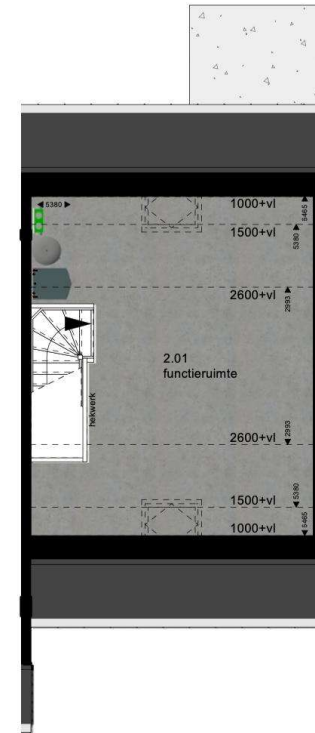


Begane grond



Verdieping



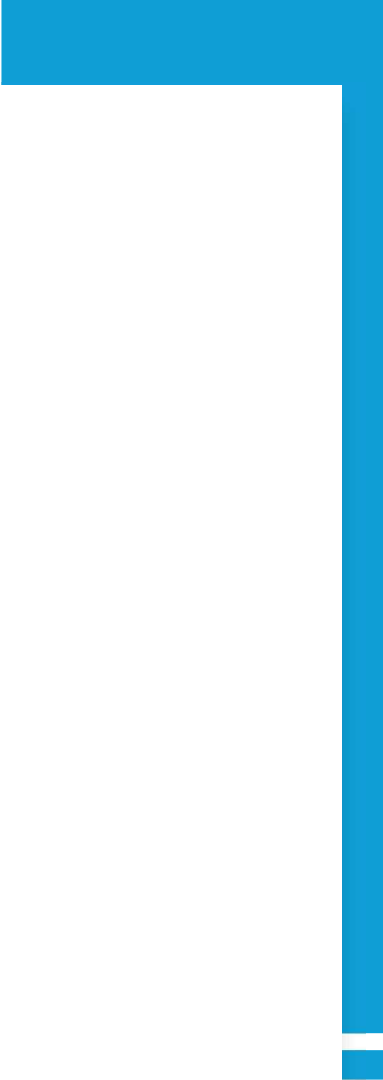
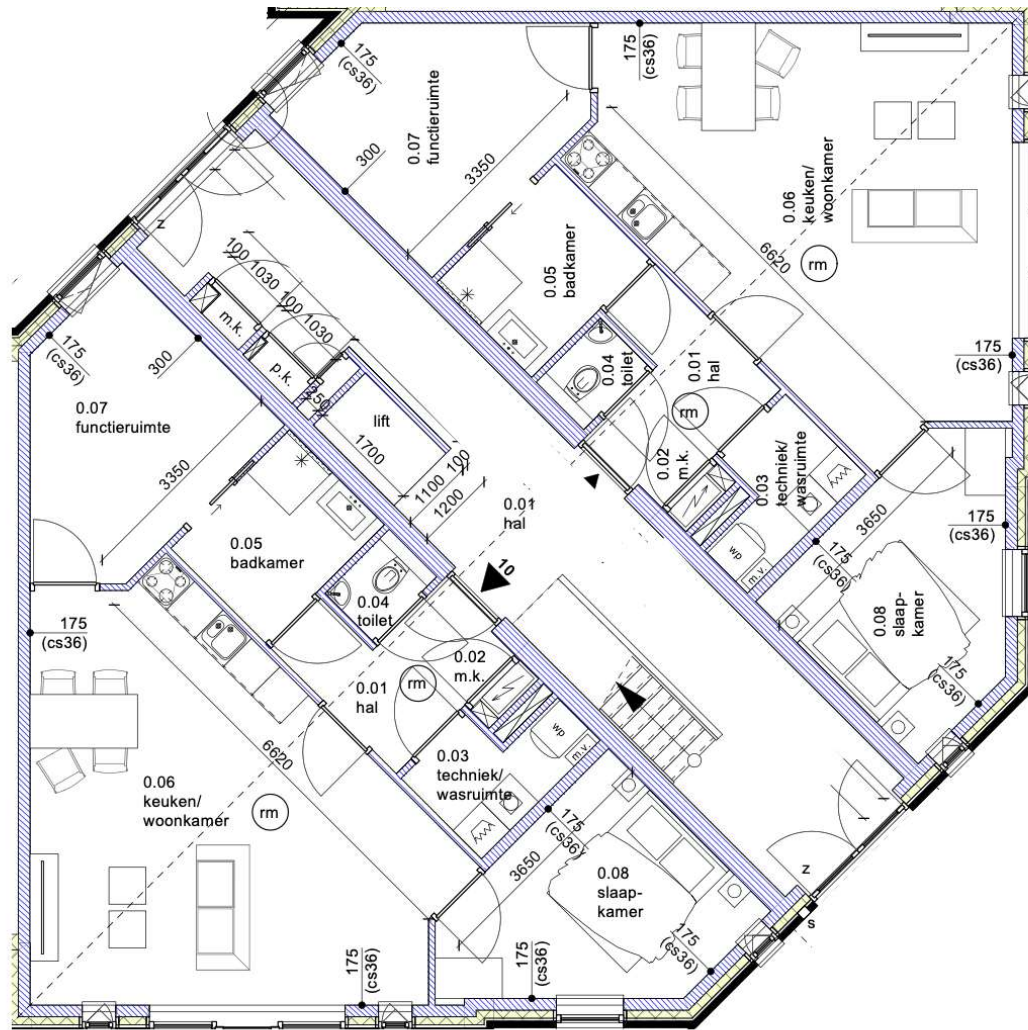
Zolder



Betref:
Woning 08

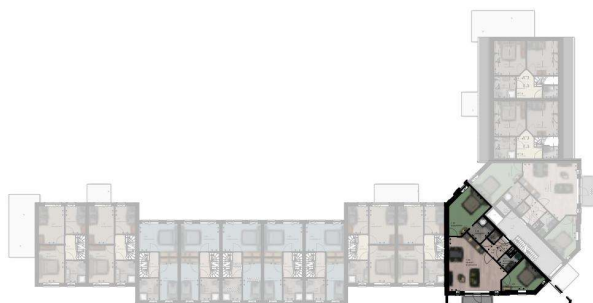
Blad:
PR-008

Datum:



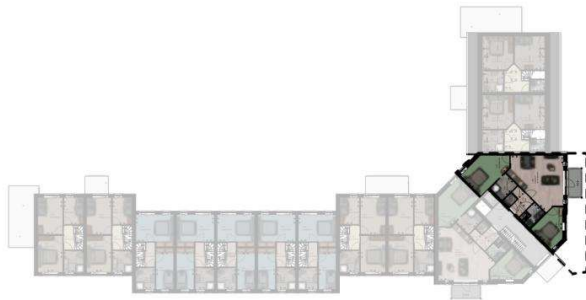


1e Verdieping





1e Verdieping

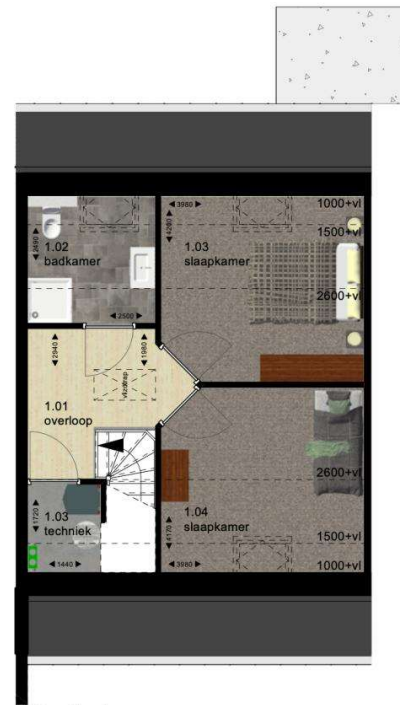


Betref:
Woning 13

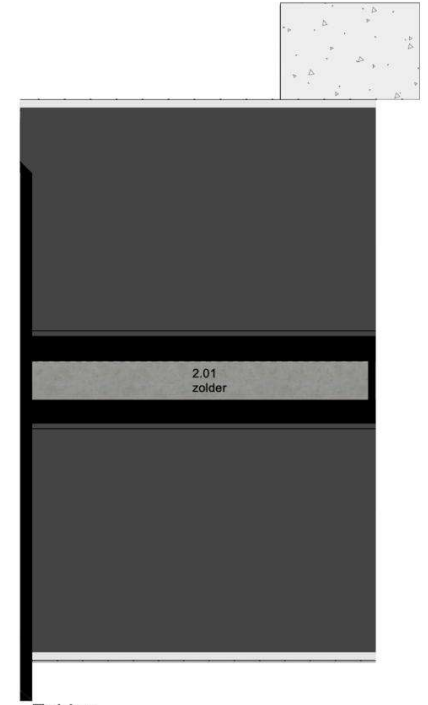
Blad:
PR-013



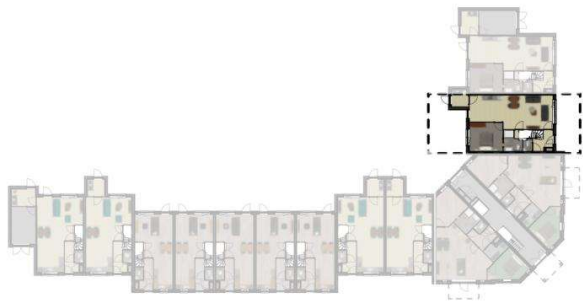
Begane grond



Verdieping



Zolder





Begane grond



Verdieping



Zolder



Betref:
Woning 17

Blad:
PR-017



Komende tijd

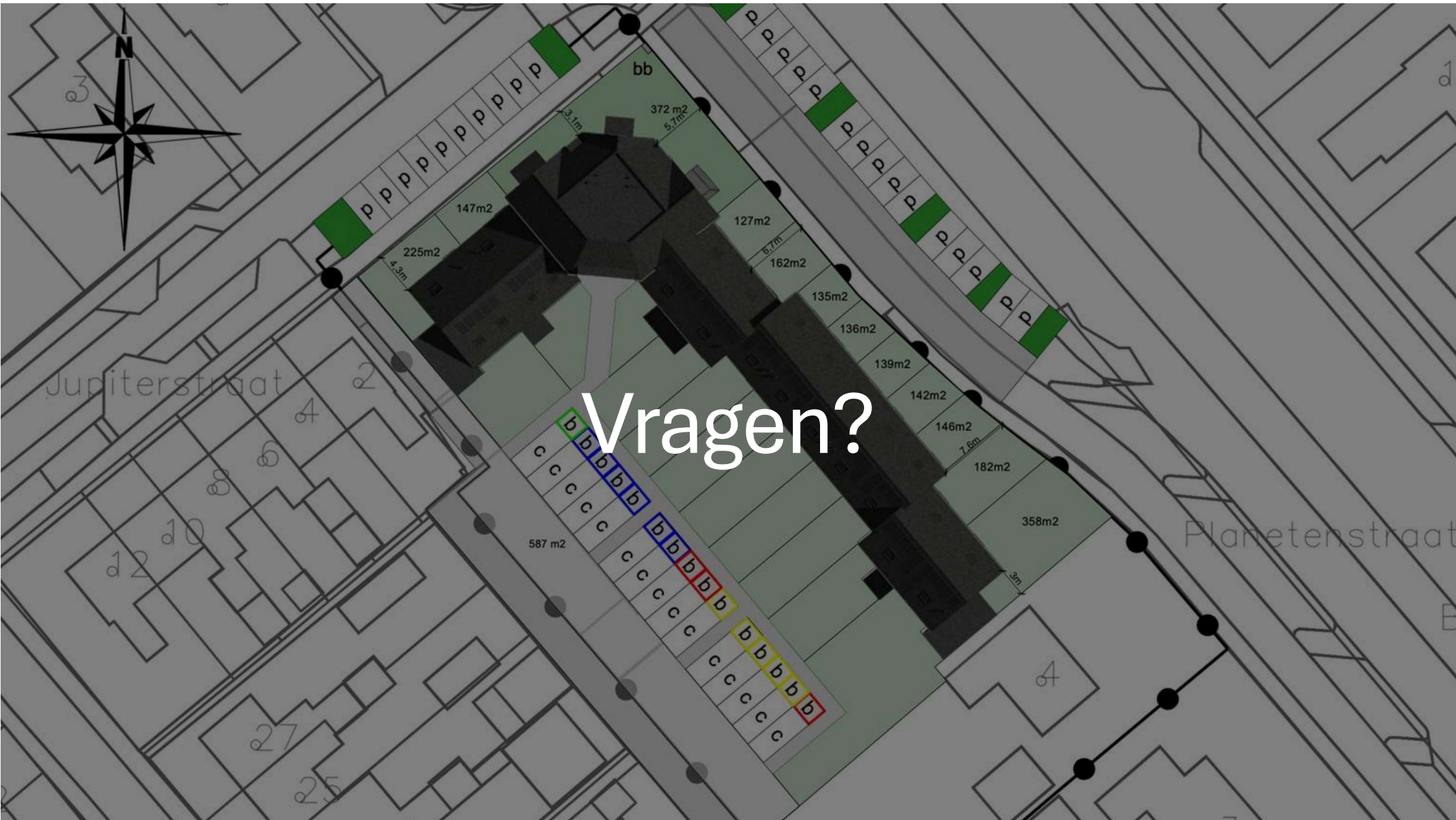
- Bouwprijzen afstemmen
- Verkoop traject
- Bouwtijd circa 1 jaar

Verkoop

- Informatie avond voor verkoop via Plaatselijk Belang
- Geïnteresseerde kunnen formulier invullen
- Geïnteresseerden die verbonden zijn aan de De Krim hebben voorrang bij de verkoop
- Verkoop eerst niet via Funda

The logo for Vrieling makelaardij is displayed on a dark blue square background. The word "vrieling" is written in a white, lowercase, sans-serif font. Below it, the word "makelaardij" is written in a smaller, white, lowercase, sans-serif font. A white horizontal line is positioned under the "makelaardij" text, extending to the right and ending under the "g" of "vrieling".

vrieling
makelaardij



Vragen?

Informatieavond



Sluiting door voorzitter Eddy Vetker